

Experiments



Requirements

ground plane
for orientation

Data use

images (camera)

Testing

required surface is
a limitation



light and "clean"
surface

images (camera)

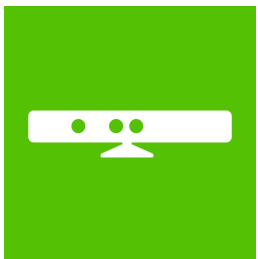
trouble scanning
surfaces



light and "clean"
surface

Video (frames)

trouble scanning
surfaces

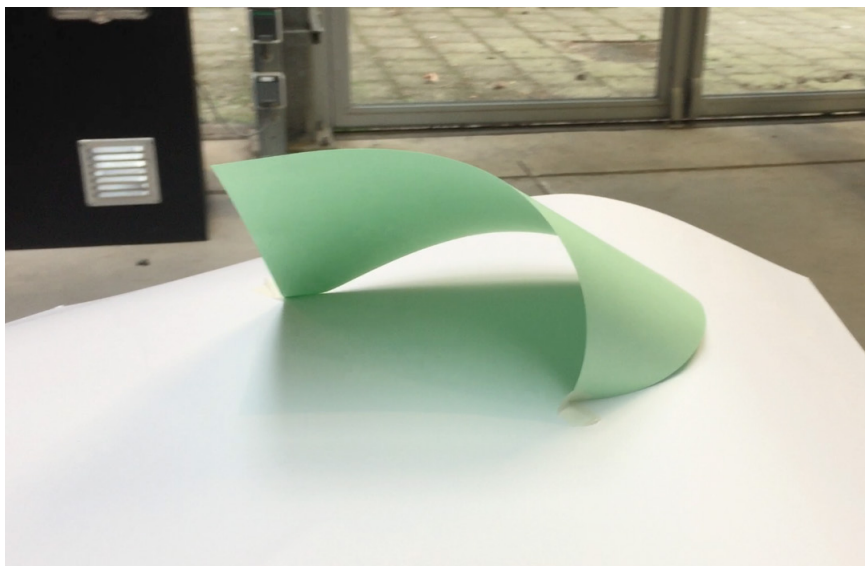


minimal require-
ments

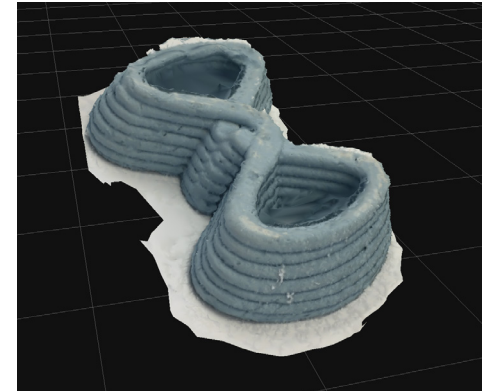
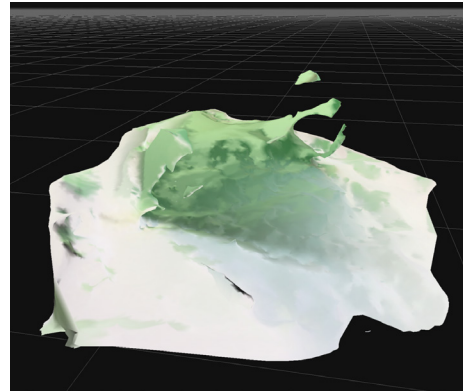
depth sensor in
combination with
camera

-

Surface vs Volume



Surface vs Volume

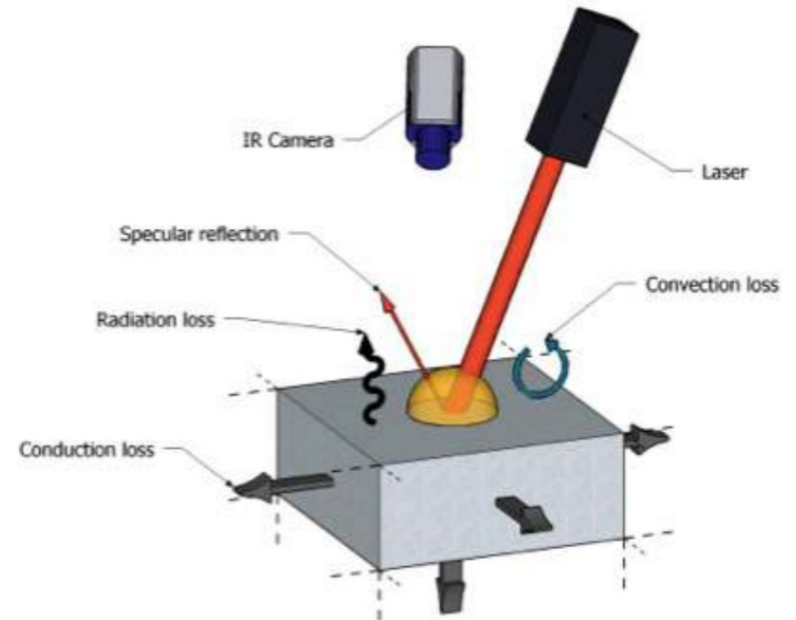


New Developments



1) 360 degree hand scanner (TU Delft)

2) Thermal scanning of transparent surfaces



a)



b)